

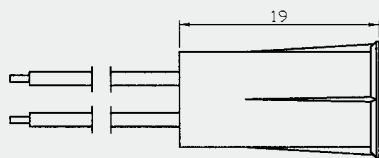
## Specification: **BR-1012**

- \* 3/8" diameter miniature flush mounted
- \* Press to fit
- \* Standard 18" #22AWG Leads
- \* Special leads upon request
- \* Switch or magnet are available separately
- \* Resistor, Diode and Supervisory Loop available on request
- \* Colors: White, Brown, Grey

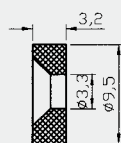
## ... Recessed Mounted



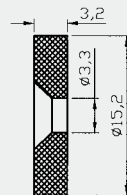
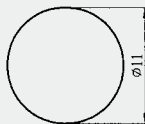
## Dimension (mm):



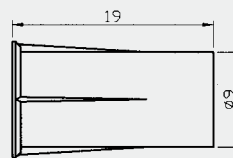
### Alternate Rare Earth Magnets:



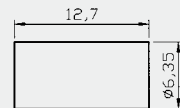
**MN400**  
for BR-1012DM



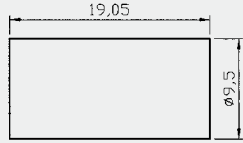
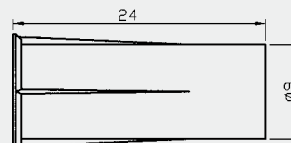
**MN600**  
for BR-1012DMWG



**M3710C**  
for BR-1012WGL



**MN2550**  
for BR-1012MN2550



**MN3775**  
for BR-1012XWG

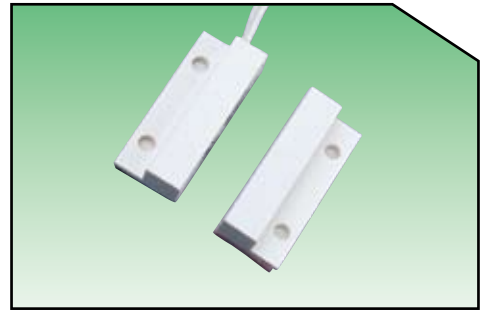
## Order Information:

Part Number	Loop Type	Reed Form	Closed Gap [Inch(mm)]	Depature Gap [Inch(mm)]	Maximum Initial Contact Resistance (Ohm)	Maximum Contact Rating (W)	Maximum Switching Voltage (VDC/VAC)	Maximum Switching Current (A)
BR-1012	Closed	N/O	3/4 (19)	0.8 (20)	0.150	10	100	0.5
BR-1012WG	Closed	N/O	1 <sup>1</sup> / <sub>4</sub> (32)	1.45 (37)	0.150	10	100	0.5
BR-1012WGL	Closed	N/O	1 <sup>1</sup> / <sub>8</sub> (28)	1.1 (28)	0.150	10	100	0.5
BR-1012MN2550	Closed	N/O	3/4 (20)	0.9 (23)	0.150	10	100	0.5
BR-1012DM	Closed	N/O	5/8 (16)	0.75 (19)	0.150	10	100	0.5
BR-1012DMWG	Closed	N/O	1 (25)	1.05 (27)	0.150	10	100	0.5

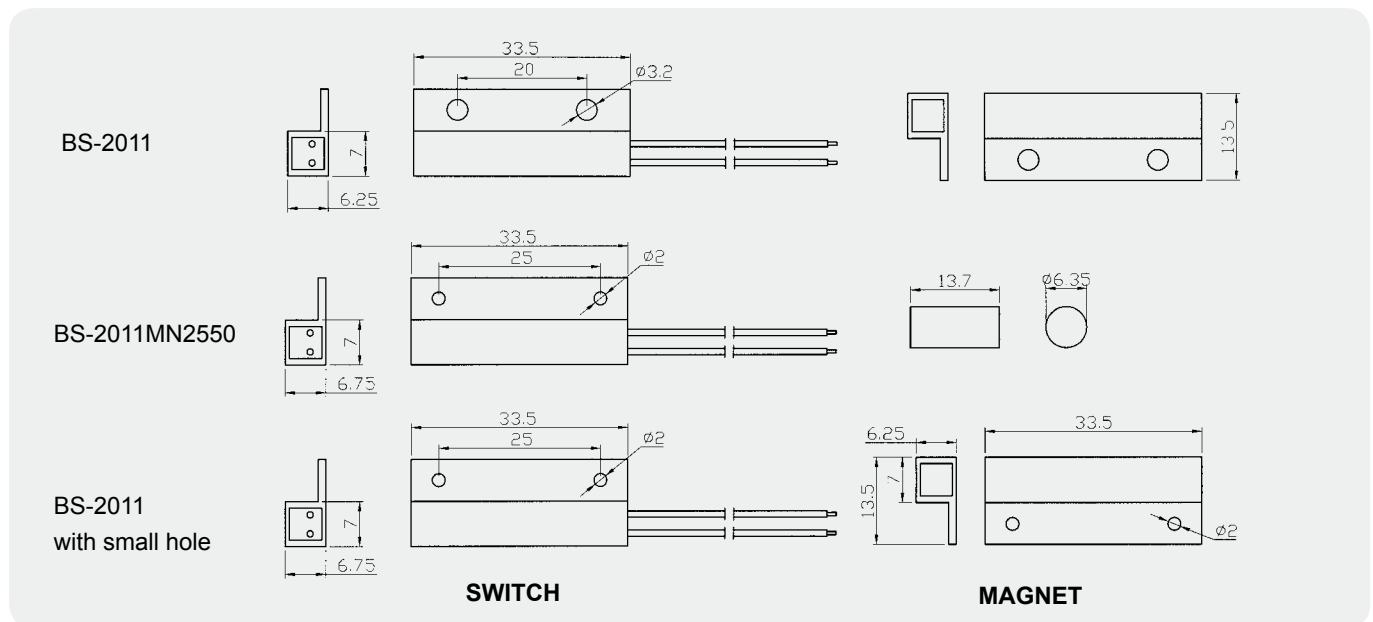
## Specification: BS-2011

- \* Mini Stick-on contact with flange
- \* Side leads with #22AWG 18" length
- \* Adhesive and screw mount included
- \* Special leads on request
- \* Switches or magnets available separately
- \* Resistor, Diode and Supervisory Loop available on request
- \* Colors: White, Brown, Grey
- \* Without Flange (BS-2051)

## ... Surface Mounted



## Dimension (mm):



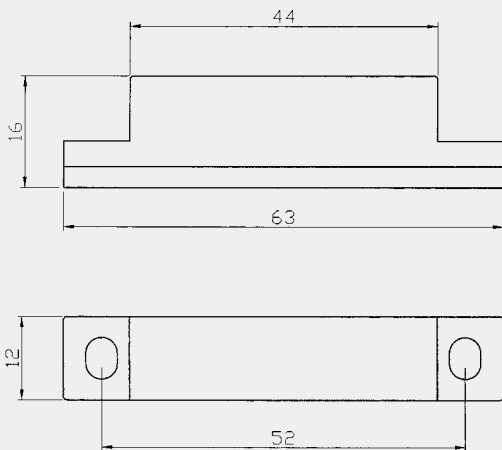
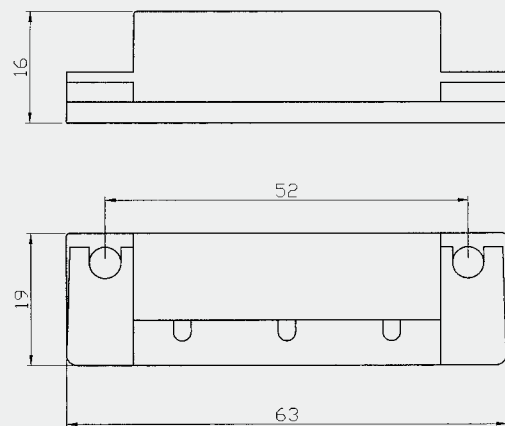
## Order Information:

Part Number	Loop Type	Reed Form	Closed Gap [Inch(mm)]	Depature Gap [Inch(mm)]	Maximum Initial Contact Resistance (Ohm)	Maximum Contact Rating (W)	Maximum Switching Voltage (VDC/VAC)	Maximum Switching Current (A)
BS-2011	Closed	N/O	1 (25)	1.06 (27)	0.150	10	100	0.5
BS-2011MN2550	Closed	N/O	1 (25)	1.1 (28)	0.150	10	100	0.5
BS-2011WG	Closed	N/O	1 <sup>1</sup> / <sub>4</sub> (31)		0.150	10	100	0.5
BS-2011A	Open	N/C	1 (24)		0.150	3	30	0.2
BS-2011C	Closed & Open	SPDT	1 (24)		0.150	3	30	0.2



**Specification: BS-2031**

- \* Screw mount Concealed terminals
- \* Spacers, cover and screws included
- \* Switches or magnets available seperately
- \* Resistor, Diode and Supervisory Loop available on request
- \* With lead available: BS-2025
- \* Colors: White, Brown, Grey

**... Surface Mounted****Dimension (mm):****MAGNET****SWITCH****Order Information:**

Part Number	Loop Type	Reed Form	Closed Gap [Inch(mm)]	Depature Gap [Inch(mm)]	Maximum Initial Contact Resistance (Ohm)	Maximum Contact Rating (W)	Maximum Switching Voltage (VDC/VAC)	Maximum Switching Current (A)
BS-2031	Closed	N/O	1.2 (30)	1.3 (33)	0.150	10	100	0.5
BS-2031A	Open	N/C	1 <sup>1</sup> / <sub>4</sub> (31)		0.150	3	30	0.2
BS-2031C	Closed	SPDT	1 <sup>1</sup> / <sub>4</sub> (30)		0.150	3	30	0.2

Note: Wire range for terminal: #18~#24AWG

## Specification:

- \* Metal magnetic contacts
- \* Ideal for commercial application or industrial use
- \* Screws included
- \* Standard 18" #22AWG leads
- \* 2 Conductor jacket cable on request(BS-2071J)
- \* Armored cable on request (BS-2071AR)
- \* Longer leads available
- \* Resistor, Diode and Supervisory Loop available on request

## ... Surface Mounted

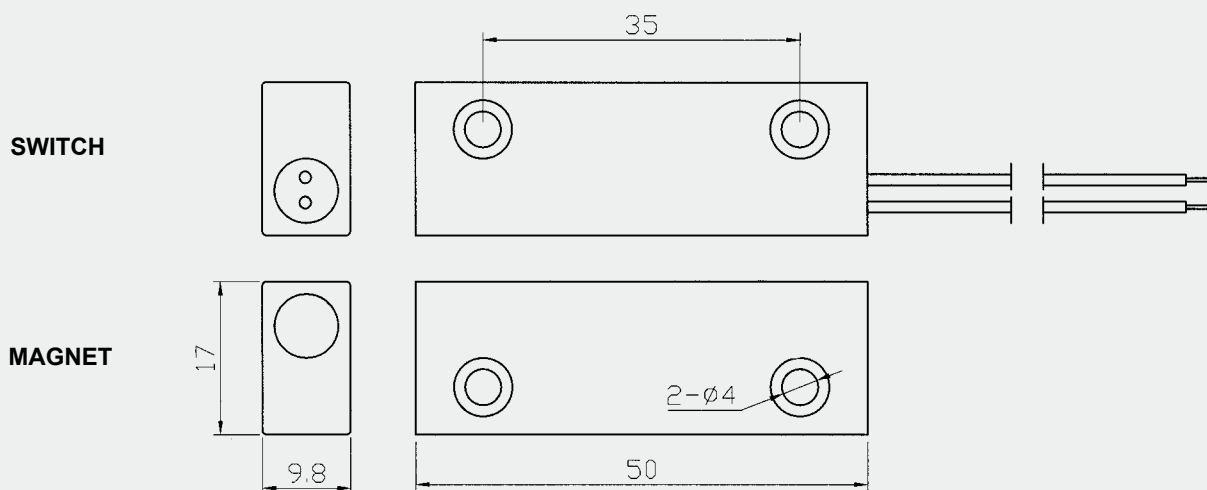
### BS-2071



### BS-2071AR



## Dimension (mm):



## Order Information:

Part Number	Loop Type	Reed Form	Closed Gap [Inch(mm)]	Depature Gap [Inch(mm)]	Maximum Initial Contact Resistance (Ohm)	Maximum Contact Rating (W)	Maximum Switching Voltage (VDC/VAC)	Maximum Switching Current (A)
BS-2071(AR)	Closed	N/O	1.5 (38)	1.65 (42)	0.150	7.5	100	0.4
BS-2071A(AR)	Open	N/C	1 <sup>1</sup> / <sub>4</sub> (32)		0.150	3	30	0.2
BS-2071C(AR)	Closed & Open	SPDT	1 <sup>1</sup> / <sub>4</sub> (32)		0.150	3	30	0.2
BS-2071D(AR)	DPDT	2SPDT	1 <sup>1</sup> / <sub>4</sub> (32)		0.150	3	30	0.2



## Specification:

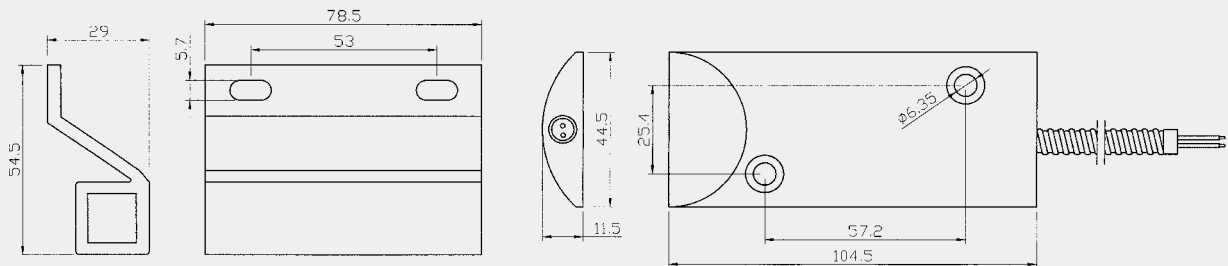
### BSD-3013

- \* Miniature floor mount
- \* Universal magnet for flexibility in mounting
- \* Extrude aluminum casings for harsh environments
- \* Wire: #22AWG with 22" armored cable
- \* Longer cable available on request
- \* Switches or magnets are available separately
- \* Jacket cable available: BSD3013-JK
- \* Resistor, Diode and Supervisory Loop available on request\

## Overhead Door Contact



## Dimension (mm):



MAGNET

SWITCH

## Order Information:

Part Number	Loop Type	Reed Form	Closed Gap [Inch(mm)]	Depature Gap [Inch(mm)] (Ohm)	Maximum Initial Contact Resistance (W)	Maximum Contact Rating (VDC/VAC)	Maximum Switching Voltage (A)	Maximum Switching Current
BSD-3013	Closed	N/O	2.95 (75)	3.18 (80)	0.150	7.5	100	0.4
BSD-3013WG	Closed	N/O	3 <sup>1</sup> / <sub>2</sub> (90)	3.75 (95)	0.150	7.5	100	0.4
BSD-3013A	Open	N/C	2 <sup>1</sup> / <sub>2</sub> (65)		0.150	3	30	0.2
BSD-3013C	Closed & Open	SPDT	2 <sup>1</sup> / <sub>2</sub> (65)		0.150	3	30	0.2
BSD-3013D	DPDT	2-SPDT	2 <sup>1</sup> / <sub>2</sub> (65)		0.150	3	30	0.2

\* These magnetic contact switches shall be installed so that a door or other movable opening cannot be opened more than 2 inches (51mm) without initiating an alarm. Switches exceeding 2 inches can not be installed per UL681-the Standard for installation and Classification of Burglar and Holdup Alarm