

# M5

## Outdoor Fingerprint & Card Reader/Controller



— IP65 Waterproof



— Metal Housing, IK10



— Fingerprint



— EM card



M5 by ANVIZ is a compact access control device that is designed to fit most door frames. A metal casing, with IP65 water-proof design, makes it suitable for indoor or outdoor applications. M5 supports 125kHz proximity cards and fingerprint identification.

It has both Wiegand and TCP/IP protocol interfaces and can be combined with SC011 (Power supply controller) to be a standalone access control device, or integrated with SAC844 (or professional distributed access controller from a third-party) to enable large-scale networks.

## Benefits

### Structured user management

(One ID matches one card and two fingerprints)

Whether you swipe the card or use fingerprint, only your ID will be showed in the system. The function makes it quite clear to the operator which subject has come and gone.

### One step to clear data

Just swipe a master card when you want to clear all the data.

### Easy installation

Equipped with metal casing and IP65 water-proof technology, M5 can be installed in various places(such as door frames, inside or outside) to meet the customers' requirements.

### High adaptability

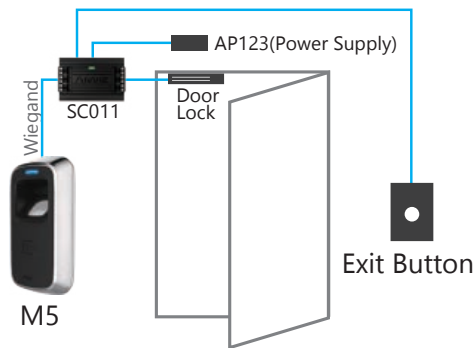
Through standard wiegand interface, M5 is compatible with most third-party access controllers, which helps to reduce the cost of upgrades and extensions.

### Cost-effective solution for small scale projects

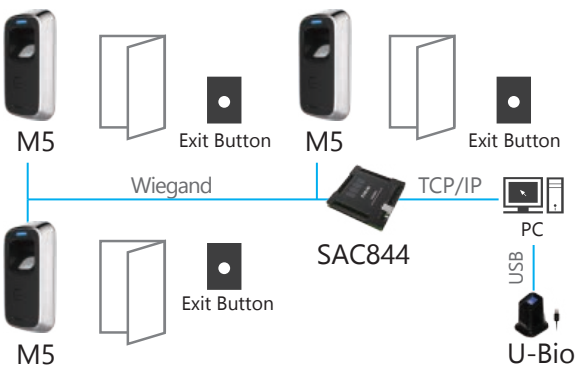
Seamlessly connects to SC011 to act as a standalone access control terminal for most small access control applications.

## Application

### Standalone Access Control System



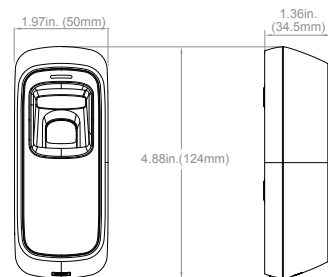
### Network Access Control System



## Features

- Slim and elegant design
- Vandal resistant metal housing, IP65
- Card read range: 0.8 to 3.1 in. (20 to 80 mm)
- BioNANO algorithm ensures fast verification under 1 second
- LED indicators and buzzer for visual and audio feedback
- Multiple verification modes guarantee flexibility and safety
- Multiple communication modes such as TCP/IP, Wiegand 26/34, easy for installation and integration
- Tamper alarm output

## Dimensions



Front view

Side view

## Specifications

Item	Description
Model	M5
Fingerprint Sensor	500 dpi Optical Sensor
RFID Card Reader	EM(125KHz)
User Capacity	2,000
Fingerprint Capacity	2,000
Card Capacity	2,000
Log Capacity	50,000
Verification Speed	< 1 Second(1:N)
Card Read Range	0.8 to 3.1 in. (20 to 80 mm)
Identification Mode	Fingerprint/Card
Network Port	TCP/IP
Wiegand Protocol	Support Wiegand 26
Voice and Interface	Multicolor LEDs and Buzzer
Operating Voltage	DC 12V
Work Current	150mA
Operating Temperature	-20°C to 60°C
Humidity	10% to 95% Non-Condensing
Size(WxHxD)	19.7 x 48.8 x 13.6 in. (50 x 124 x 34.5 mm)
Accessory	SC011(Controller)
Certificate	FCC, CE, RoHS